

## Titan Operator Program 900 Series

The Titan Operator Program 900 Series is our latest software version, included with all new Argus Titan Systems. It is also available as an upgrade for existing systems to take advantage of the enhanced features of existing Titan Systems.



### Applications

The Argus Operator program is used to access the control system from a local or remote PC. The program contains an extensive set of features for managing your data and monitoring equipment, controlled processes and environmental conditions. Each site is customized to match the physical layout of your facility and equipment.

The Operator program offers the flexibility of complete user customization capabilities. You can design all your own custom screens and a navigation system that best suits your needs. Each user of the system can develop a personalized screen system and custom overviews.

### Features

**Style Updates** – We have updated and “refreshed” the overall look and feel of the software window, with new fonts, colors, and layouts. Some examples include: new font types and screen colors, raised/sunken Menu Entries, and new Graph look and feel.

### Featured Options

#### Visual Controls

We have enhanced the visual controls design of the software, with an emphasis on helpful tools that users can use to build a better UI experience. These enhancements are used to eliminate the “information clutter” and provide user-friendly interactive data and information.

**Argus Navigator** – Created a new radial dial where you can perform various menu actions, much like the right-click menu. Add system parameters to the radial dial for quick access.

**Argus Panel** – A new adjustable layout container where you can place other visual elements inside of it. It can be used for any of the new visual controls listed below, as well as other existing elements.

**Argus Linear Gauges (Type 1 and Type 2)** – Added Gauges that allow you to create a view-only panel display range for a specific value. Each bar contains sections containing various alarm settings.

**Argus Proportional and Digital Controls** – We have added the Argus Proportional two button control type, used to present a percentage of a linked element, and the Argus Digital three button control type. Argus Digital controls present an ON/OFF state for a linked element.

**Argus Table** – A new table layout containing configurable parameter information in a collated format. It displays data values in a highly visual tabular view.

**Argus Indicators** – We have added indicators to show the ON and OFF states of a parameter. This way you can get a much more visual indication if a specific parameter is in an ON state, or an OFF state.

## Featured Options Continued

### Graph Update

The Argus Graphs have a new graph window that has been extensively updated with three key additions:

**Allowing Multiple Graphs** – Graphs are now merged into the software rather than a separate application. If you open a graph, it is embedded in your window, but still allows the option of having a graph in a separate window if preferable. You can now display multiple graphs on the screen.

**New Toolbar/Graph Window**- The toolbar has been enhanced, with many of the old features you enjoyed, and updated with new functionality, such as turning the toolbar on and off, the **Edit** menu re-organized, the **Scaling**, **Display**, and **Interval** menu options are now buttons for better access, and the **Legend** can now be displayed or not, and change the alignment and direction. **Sharpen Data** is now drop-down menus including **Sample Rate** and **Noise filter**. The **Tabular**, **Horizontal** and **Vertical** buttons were removed and are accessed directly under the graph in tab view.

**Creating and Using Annotations**- You can now Add, Edit or Delete annotations (same idea as a channel note) to any X or Y data point on a graph.

**Scheduled Graph Download** - Allows you to schedule a download of data based on a graph report.

### Graphical Link View

Titan has always depended on manually assigned data linkages, so it has been important to understand the logical and physical connections on each system.

It is now possible for users to follow the data linkages along their logical pathways and enhanced the process of following a pointer link back to its source, and reveal all pointers currently pointing to a specific parameter.

It also includes a representation of the physical hardware connections in your system.

### Argus API

Build 900 is API ready for our customers wanting access to their system data and to share it. Our new Argus API (Application Program Interface) allows access to our data from external sources.

This Argus API is the interface to a database of information, where users determine the elements they want to display and data is returned in a string (date/time, parameter, data).

The Argus API allows you to more efficiently manage your data and access real-time information to compare to your own operation data.

Currently the Argus API has some restrictions:

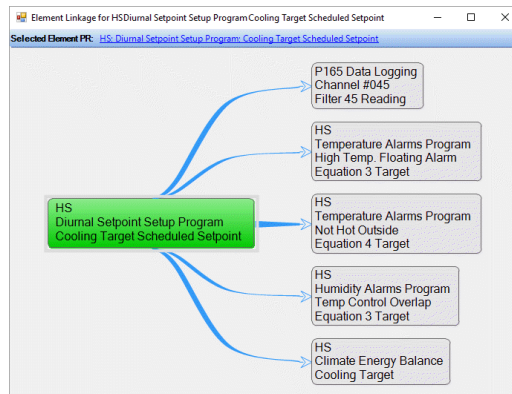
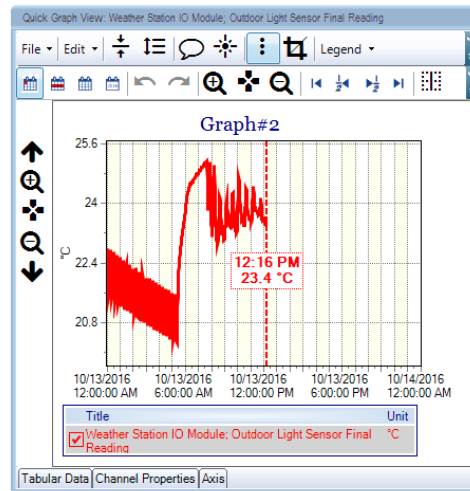
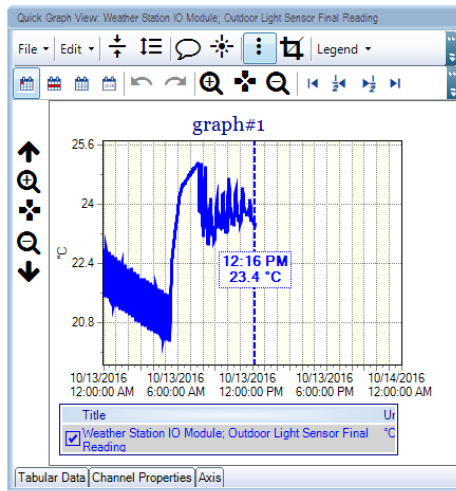
- **API Out only:** users can only retrieve information (GET only) from their own system to use for data analysis.
- **Authentication:** A **Username** and **Password** are required.
- **User Privileges** are required before using the API.

Users must be familiar with both **RESTful** and **JSON**, and be using either **Postman REST Client** or a similar tool, capable of sending and capturing API requests, to access the data.

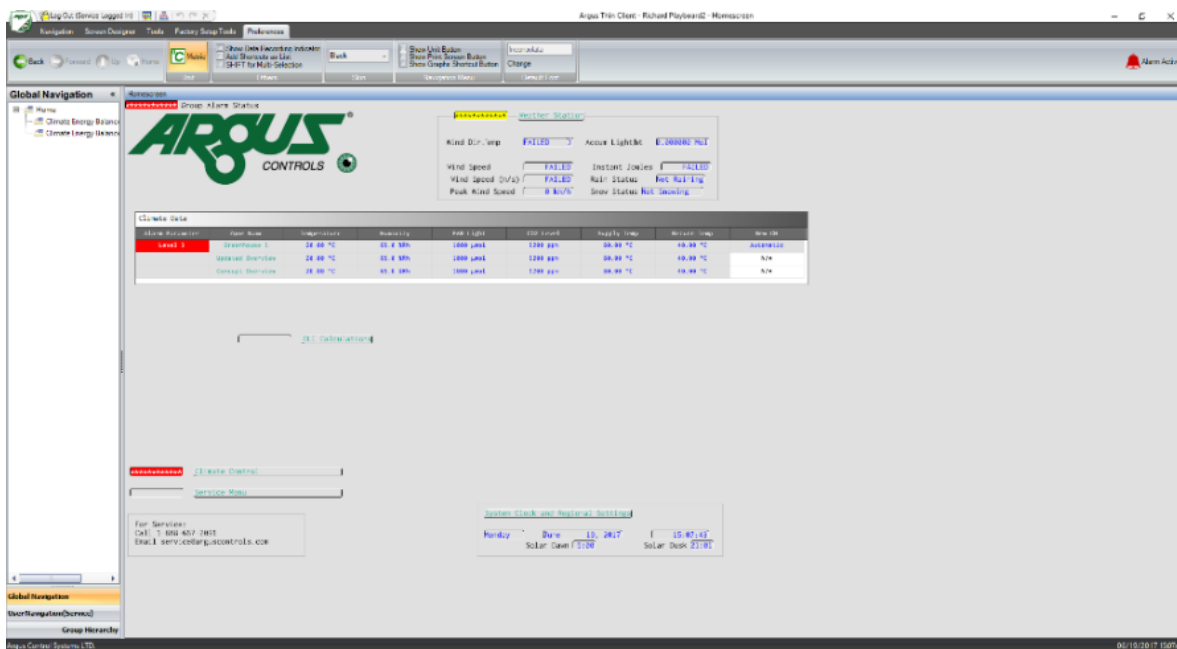
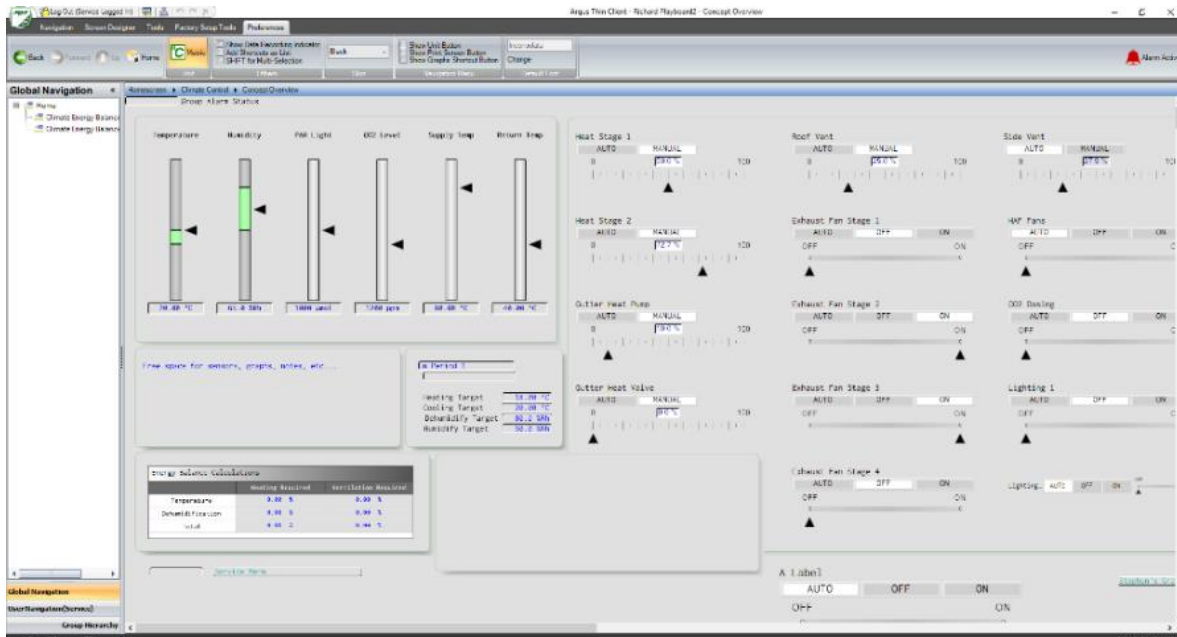
## Options Available for Purchase

Name	Description
<b>NEW!</b> Visual Controls*	Helpful enhancement tools to give a better UI experience, and help de-clutter your screen.
<b>NEW!</b> Graphical Link View	Allows you to follow data linkages and follow a pointer link back to its source.
<b>NEW!</b> Enhanced Graphs	Updated graphs allowing multiple graphs on the screen, new menu options and a new Annotations feature.
<b>NEW!</b> Argus API	Argus API OUT allows access to our data from an external source, using a client of your choice.
<b>NEW!</b> Version 9	Upgrade to Titan 900 Operator Software from Build 200 or earlier version.
Enhanced Settings Auditor	Purchase to see Audit Trails – displaying the history of all user initiated changes in the system.
Advanced Access Control	Enhanced Password Control – allows you to use Access Profiles.
Email Out	Sends email notifications from the Argus System either through a Cloud email server, or an SMTP email server. Version 2.
Setpoint Schedule Manager	Import data files enabling climate control based on actual weather records or model-generated climate data.

\*Included with all new purchased systems.



# Options Available for Purchase



## Additional Information

For more information, please contact Argus.

