

Line Voltage Interface Module

The RM-1CG-OL is used for switching a single-phase or three phase motor load up to 7.5 HP @ 600V maximum. Motor overload protection is provided via an integrated overload relay.



Applications

The RM-1CG-OL provides a line voltage interface with thermal overload protection between a low voltage output on the Argus control system and a motor load. Typical applications include single speed fans, motors, and pumps.



Alternatives

Use the **RM-2DP** for larger motor and lighting loads of up to 15hp. For non-reversing motor loads that do not require overload protection, use the **RM-2CG**. Pilot duty contactors and mechanically interlocked reversing motor relays are also available. Argus supplies a full range of standard and custom-built relay interfacing products to suit your applications. Packaged motor starters are also available from electrical suppliers. Contact Argus for additional details.

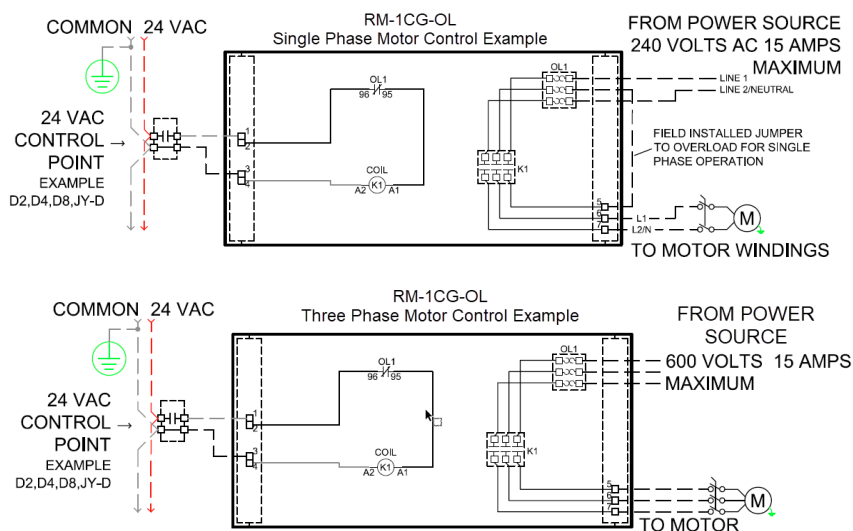
Features

- **Versatile** - Can be used for single phase and three phase applications.
- **Reliable** - Contacts have a long service life
- **Modular** - Each module is factory assembled, prewired, labeled, and preapproved for field use. All components are mounted on a pre-drilled back plate assembly for mounting into standard Argus panels. Detailed, custom drawings are provided.
- **Standardized** - Modules are designed to handle typical greenhouse loads.
- **Cost Effective** - Argus selects reliable, compact, cost-effective CSA/UL approved components from manufacturers who are industry leaders in both technology and service.
- **Ease of Wiring** - Each module is prewired according to equipment load ratings. Spring tension terminals ensure uniform contact pressure with wire ends.
- **Protection** - The integrated overload relay provides protection against overload, phase loss, or phase unbalanced load conditions.

Specifications

Dimensions (mounting bracket)	11" x 3" (length x width); mounting centers at 10.5"	
Relay	Single IEC-style 3-pole mini contactor (20 Amp rated)	
Maximum Load Ratings (see NOTE)	120 VAC 1Φ: 1 HP 240 VAC 1Φ: 2 HP	208/240 VAC 3Φ: 3 HP 480 VAC 3Φ: 7.5 HP 600 VAC 3Φ: 7.5 HP
Overload Relay	Class 10A, Bimetallic CGT-12M - specify overload range (Amps) when ordering: [0.10 to 0.16] [0.63 to 1.0] [4 to 6] [9 to 13], [0.16 to 0.25] [1.0 to 1.6] [5 to 8] [12 to 16] [0.25 to 0.40] [1.6 to 2.5] [6 to 9] [0.40 to 0.63] [2.5 to 4] [7 to 10]	
Coil Rating	24 VAC 50/60Hz (6 VA draw - 32 VA inrush) (Maximum 6 Modules Per 75VA TX)	
Maximum Switching Voltage	600 VAC	
Maximum General Purpose Switching Current	15 A	
Terminal Block	Spring tension, accommodating 12 - 22 AWG field wiring	
Factory Wiring	Low voltage: 18 AWG, TEW 600 V 105°C equipment wire Line Voltage: 14 AWG, TEW 600 V 105°C equipment wire	

Wiring Details



Notes:

These are typical wiring examples. Refer to the custom wiring diagrams supplied with each part for full installation details.

Use copper conductors only.

Wire Connection Sizes:

Class II Control Wiring: 18-14 AWG
Power Wiring: 14-12 AWG

Additional Information

For more information, please contact Argus.

