

## Line Voltage Interface Module

The RM-2CGR is a mechanically interlocked dual, 3-pole mini contactor used for switching a single-phase or a three-phase instant-reversing motor load in applications where thermal overload protection is not required or is provided with the motor package.



### Applications



This module is used for **three-wire, shared common control signals** to provide line voltage interfacing between the Class 2 outputs on the Argus control system and an instant reversing motor with built-in or line voltage limit switches.

Typical examples include motors used for operating roof vents and shade curtains. Terminals are provided for connection to external motor travel limits.

### Alternatives

For reversing motor applications where overload protection is required, use the single-phase **RM-2CGR-OL-1PH** or the three-phase **RM-2CGR-OL-3PH**. Argus supplies a full range of standard and custom-built relay interfacing products to suit your applications. Packaged motor starters are also available from electrical suppliers. Contact Argus for additional details.

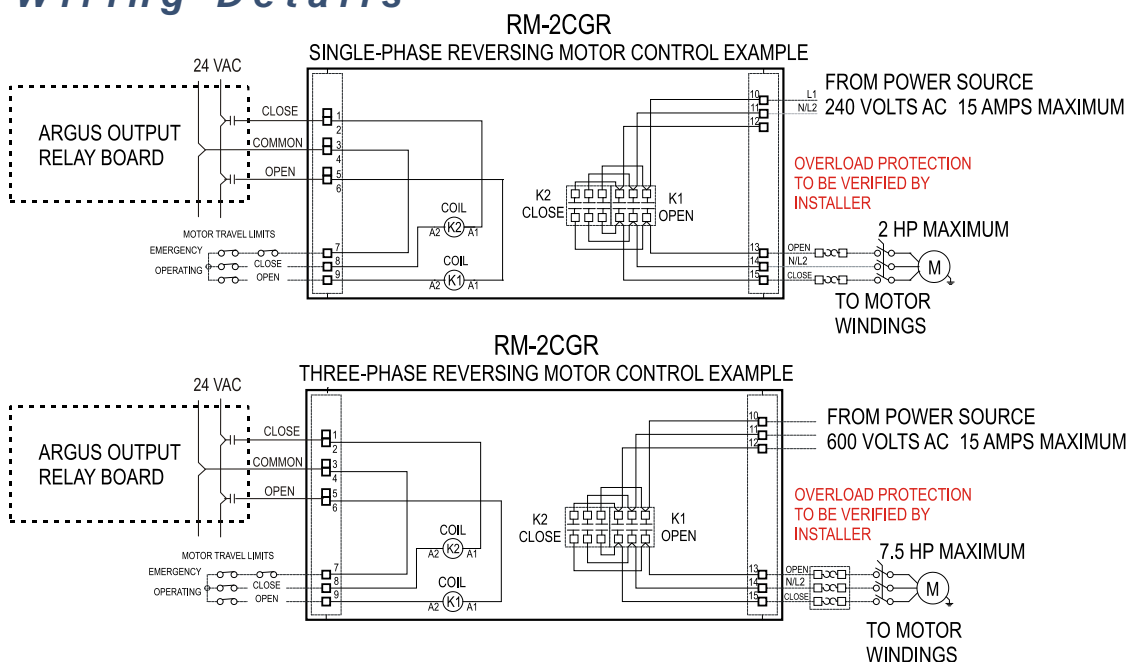
### Features

- **Reliable** - Contacts have a long service life.
- **Quality Components** - Argus selects reliable, compact, cost-effective, CSA/UL approved components from industry leading manufacturers
- **Modular** - Each module is factory assembled, prewired, labeled, and preapproved for field use. All components are mounted on a pre-drilled back plate assembly for mounting into standard Argus panels. Detailed, custom drawings are provided.
- **Ease of Wiring** - Each module is prewired according to equipment load ratings. Spring terminals assure uniform contact with field wiring terminations.
- **External Travel Limits** - landed on the module
- **Safe** - mechanically interlocked to prevent the OPEN and CLOSE contacts from being energized at the same time.

## Specifications

<b>Dimensions (mounting bracket)</b>	11" x 3" (length x width); mounting centers at 10.5"	
<b>Relay</b>	Dual IEC-style 3-pole mini contactors (20 Amp Rated)	
<b>Maximum Load Ratings (see NOTE)</b>	115VAC - 1 $\Phi$ : 1 HP	208/240 VAC 3 $\Phi$ : 3 HP
	208/240VAC - 1 $\Phi$ : 2 HP	460 VAC 3 $\Phi$ : 7.5 HP 575 VAC 3 $\Phi$ : 7.5 HP
<b>Coil Rating</b>	24 VAC 50/60Hz (1 x 6 VA draw - 32 VA inrush) (Maximum 6 Modules Per 75VA TX)	
<b>Maximum Switching Voltage</b>	600 VAC	
<b>Maximum General Purpose Switching Current</b>	15 A	
<b>Terminal Block</b>	Spring tension, accommodating 12 - 22 AWG field wiring	
<b>Factory Wiring</b>	Low voltage: 18 AWG, TEW 600 V 105°C equipment wire Line voltage: 14 AWG, TEW 600 V 105°C equipment wire	

## Wiring Details



Notes: Typical wiring example. Refer to the custom wiring diagrams supplied with each part for full installation details.  
Wire Sizes: Class II Control Wiring: 18-14 AWG    Power Wiring: 14-12 AWG    Use copper conductors only

## Additional Information

For more information, please contact Argus.

