

Line Voltage Interface Module

The RM-2CGR-OL-3PH is a dual, mechanically interlocked 3-pole mini contactor with thermal overload protection used for switching a three-phase, instant-reversing motor load.



Applications



This module is used for **three-wire, shared common control signals** to provide line voltage interfacing between the Class 2 outputs on the Argus control system and a three-phase instant reversing motor.

Motor overload protection is provided by integrated thermal overload circuitry.

Typical applications include motors used for operating roof vents and shade curtains in greenhouses.

Alternatives

For single-phase instant-reversing applications with overload protection, use the **RM-2CGR-OL-1PH**. For single or three-phase reversing motor applications where overload protection is not required, use the **RM-2CGR**. Argus supplies a full range of standard and custom-built relay interfacing products to suit your applications. Packaged motor starters are also available from electrical suppliers. Contact Argus for additional details.

Features

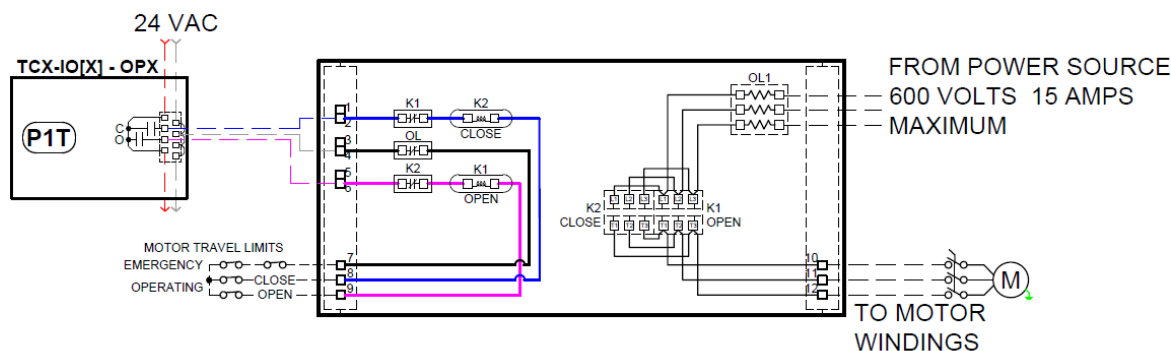
- **Reliable** - Contacts have a long service life.
- **Quality Components** - Argus selects reliable, compact, cost-effective, CSA/UL approved components from industry leading manufacturers.
- **Modular** - Each module is factory assembled, prewired, labeled, and preapproved for field use. All components are mounted on a pre-drilled back plate assembly for mounting into standard Argus panels. Detailed, custom drawings are provided.
- **Ease of Wiring** - Each module is prewired according to equipment load ratings. Spring terminals assure uniform contact with field wiring terminations.
- **External Travel Limits** - landed on the module.
- **Safe** - mechanically interlocked to prevent the OPEN and CLOSE contacts from being energized at the same time.

Specifications

Dimensions (mounting bracket)	11" x 3" (length x width); mounting centers at 10.5"
Relay	Dual IEC-style 3-pole mini contactor (20 Amp rated)
Maximum Load Ratings (see NOTE)	208/240 VAC 3Φ: 3 HP 480 VAC 3Φ: 7.5 HP 600 VAC 3Φ: 7.5 HP
Overload Relay	Class 10A, Bimetallic CGT-12M - specify overload range (Amps) when ordering: [0.10 to 0.16] [0.63 to 1.0] [4 to 6] [9 to 13], [0.16 to 0.25] [1.0 to 1.6] [5 to 8] [12 to 16], [0.25 to 0.40] [1.6 to 2.5] [6 to 9] [0.40 to 0.63] [2.5 to 4] [7 to 10]
Coil Rating	24 VAC 50/60Hz (6 VA draw - 32 VA inrush) (Maximum 6 Modules Per 75VA TX)
Maximum Switching Voltage	600 VAC
Maximum General Purpose Switching Current	15 Amps
Terminal Block	Spring tension, accommodating 12 - 22 AWG field wiring
Factory Wiring	Low voltage: 18 AWG, TEW 600 V 105°C equipment wire Line Voltage: 14 AWG, TEW 600 V 105°C equipment wire

Wiring Details

Wiring Connections with Titan Control



Notes: This is a typical wiring example. Refer to the custom wiring diagrams supplied with each part for full installation details.

Wire Sizes: Class II Control Wiring - 18-14 AWG; Power Wiring - 14-12 AWG. Use copper conductors only.

Additional Information

For more information, please contact Argus.

