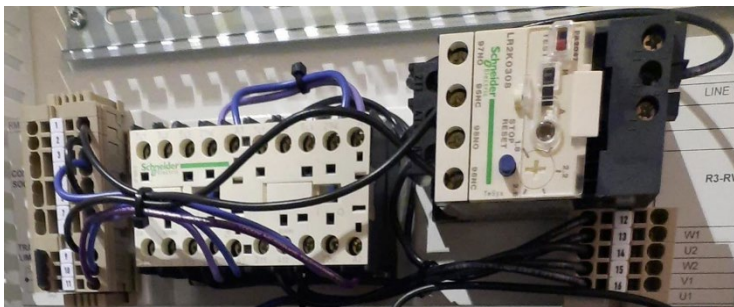


Line Voltage Interface Module

The **RM-2CGR5WOL** is a mechanically interlocked dual, 3-pole mini contactor used for switching a 5-wire reversing motor in applications where thermal overload protection is required.



Applications



This module is used to provide line voltage interfacing between the Class 2 outputs on the Argus control system and a 5-wire reversing motor with built-in or line voltage limit switches.

Typical examples include motors used for operating roof vents and shade curtains. Terminals are provided for connection to external motor travel limits.

Alternatives

Argus supplies a full range of standard and custom-built relay interfacing products to suit your applications. Packaged motor starters are also available from electrical suppliers. Contact Argus for additional details.

Features

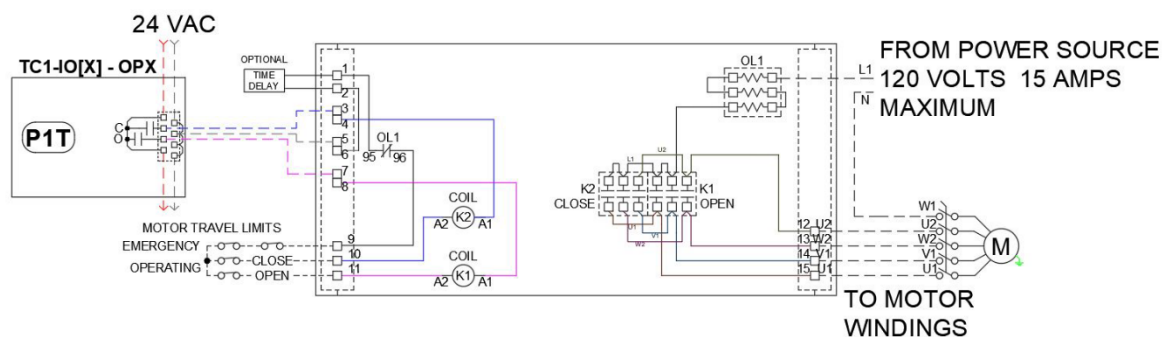
- **Reliable** - Contacts have a long service life.
- **Quality Components** - Argus selects reliable, compact, cost-effective, CSA/UL approved components from industry leading manufacturers.
- **Modular** - Each module is factory assembled, prewired, labeled, and preapproved for field use. All components are mounted on a pre-drilled back plate assembly for mounting into standard Argus panels. Detailed, custom drawings are provided.
- **Ease of Wiring** - Each module is prewired according to equipment load ratings. Spring terminals assure uniform contact with field wiring terminations.
- **External Travel Limits** - landed on the module.
- **Safe** - mechanically interlocked to prevent the OPEN and CLOSE contacts from being energized at the same time.

Specifications

Dimensions (mounting bracket)	11" x 3" (length x width); mounting centers at 10.5"
Relay	Dual IEC-style 3-pole mini contactors (20 Amp Rated)
Maximum Load Ratings (see NOTE)	115VAC - 1Φ: 1 HP 208/240VAC - 1Φ: 2 HP
Coil Rating	24 VAC 60Hz (1 x 6 VA draw - 32 VA inrush) (Maximum 6 Modules Per 75VA TX)
Maximum Switching Voltage	600 VAC
Maximum General Purpose Switching Current	15 A
Terminal Block	Spring tension, accommodating 12 - 18 AWG field wiring
Factory Wiring	Low voltage: 18 AWG, TEW 600 V 105°C equipment wire Line voltage: 12 AWG, TEW 600 V 105°C equipment wire

Wiring Details

RCP MODULE : 2CGR5WOL 5 WIRE REVERSING MOTOR CONTROL Wiring Connections with Titan Control



Notes: Typical wiring example. Refer to the custom wiring diagrams supplied with each part for full installation details.
Wire Sizes: Class II Control Wiring: 18-12 AWG Power Wiring: 14-12 AWG Use copper conductors only

Additional Information

For more information, please contact Argus.

