

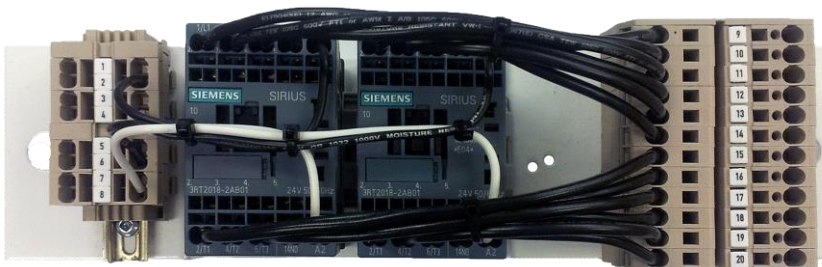
Line Voltage Interface Module

The RM-2DP-4 is a dual, 3-pole contactor module for switching up to two motor or lighting loads up to 10 HP each.



Applications

The RM-2DP-4 is typically used to provide line voltage interfacing for motors, pumps, and ballasted lighting loads (for example, fluorescent and HID lighting).



Alternatives

Use the **RM-2CG** for smaller motor loads of up to 7.5 hp at 600VAC. For non-reversing motor loads requiring overload protection, use the **RM-1CG-OL**. Pilot duty contactors and mechanically interlocked reversing motor relays are also available. Argus supplies a full range of standard and custom-built relay interfacing products to suit your applications. Packaged motor starters are also available from electrical suppliers. Contact Argus for additional details.

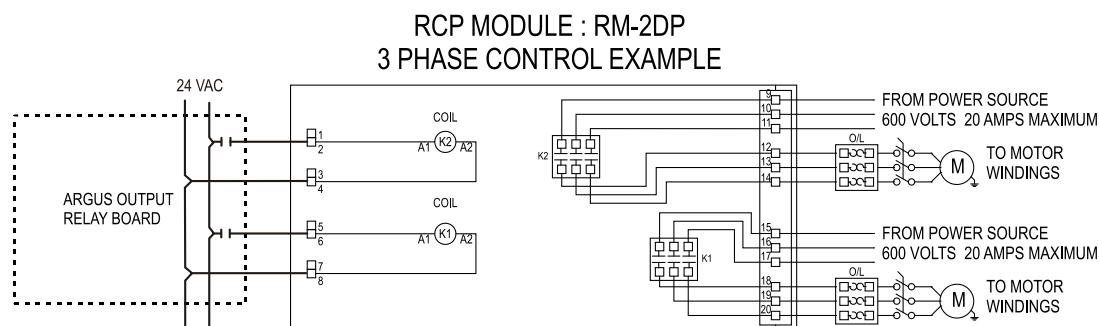
Features

- **Reliable** - Contacts have a long service life.
- **Cost Effective** - Argus selects reliable, compact, cost-effective CSA/UL approved components from manufacturers who are industry leaders in both technology and service.
- **Modular** - Each module is factory assembled, prewired, labeled, and preapproved for field use. All components are mounted on a pre-drilled back plate assembly for mounting into standard Argus panels. Detailed, custom drawings are provided.
- **Ease of Wiring** - Each module is prewired according to equipment load ratings. Spring terminals assure uniform contact with field wiring terminations.

Specifications

Dimensions (mounting bracket)	11" x 3" (length x width); mounting centers at 10.5"	
Relay	Dual 3-pole contactor (30 Amp rated)	
Maximum Load Ratings (see NOTE)	120 VAC, 1 Φ : 1 HP 240 VAC, 1 Φ : 2 HP	208/240 VAC, 3 Φ : 3 HP 480 VAC, 3 Φ : 10HP 600 VAC, 3 Φ : 10 HP
Coil Rating	24 VAC 50/60Hz	
Maximum Switching Voltage	600V	
Maximum General-Purpose Switching Current	20A	
Terminal Block	Spring tension, accommodating 10 - 22 AWG field wiring	
Factory Wiring	Low voltage: 18 AWG, TEW 600 V 105°C equipment wire Line Voltage: 12 AWG, TEW 600 V 105°C equipment wire	

Wiring Details



Notes: This is a typical wiring example. Refer to the custom wiring diagrams supplied with each part for full installation details.

Wire Sizes:

Class II Control Wiring: 18-14 AWG; Power Wiring: 10 AWG. Use copper conductors only.

Additional Information

For more information, please contact Argus.

