

Enhanced Graphs

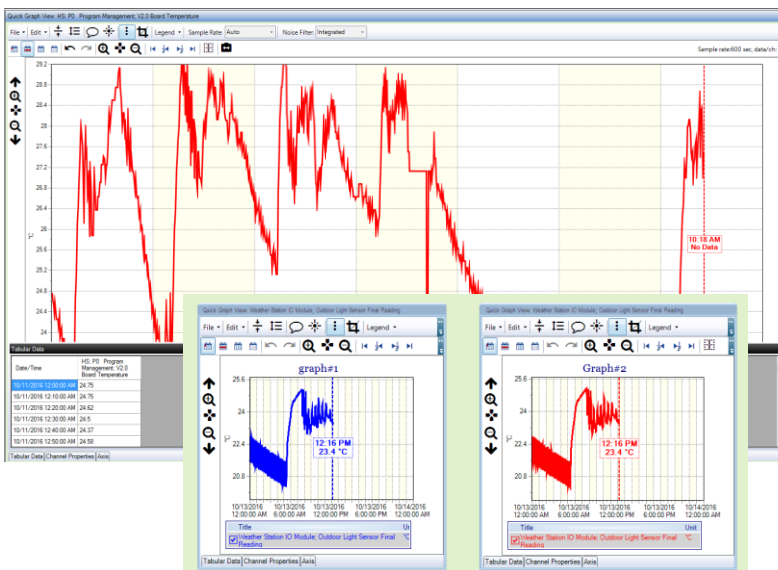
The Argus Graph is a powerful tool for visualizing your recorded data and for understanding the complex cause and effect relationships between your controlled environments and processes and the equipment you use to manage them.



Applications

The Argus Graph is a utility for viewing and exporting the recorded data on your Argus system. With it you can monitor and analyze all your recorded data and save custom graph Reports for easy future access.

Your control system does its work in real time in an ever-changing environment. By recording, viewing, and analyzing data from your sensors as well as control data, you can better understand how your system is performing over time.



With integrated data recording features, your system measures and records large quantities of sensor and control data for later recall and analysis. Data Recording helps visualize the dynamic interactions of your control system.

Argus graph enables you to get the most from your recorded data. Featuring graphical and tabular views, not only can you visualize the effects of present readings and settings on your system, but you can see how these values are changing over time.

Features

- **Allowing Multiple Graphs** - Graphs are now merged into the software rather than a separate application. If you open a graph, it is embedded in your window, but still allows the option of having a graph in a separate window if preferable. You can now display multiple graphs on the screen.
- **New Toolbar/Graph Window** - The toolbar has been enhanced, with many of the old features you enjoyed, and updated with new functionality, such as turning the toolbar on and off, the **Edit** menu re-organized, the **Scaling**, **Display**, and **Interval** menu options are now buttons for better access, and the **Legend** can now be displayed or not, and change the alignment and direction. **Sharpen Data** is now drop-down menus including Sample Rate and Noise filter. The Tabular, Horizontal and Vertical buttons were removed and are accessed directly under the graph in tab view.
- **Creating and Using Annotations** - You can now Add, Edit or Delete annotations (same idea as a channel note) to any X or Y data point on a graph.
- **Scheduled Graph Download** - Allows you to schedule a download of data based on a graph report.