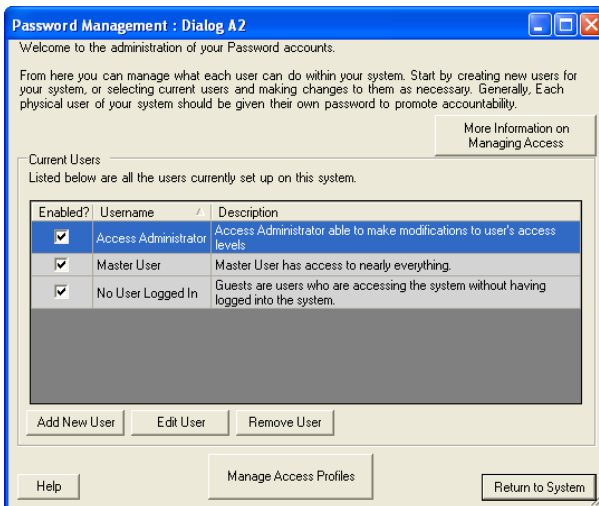


Enhanced Password Control Add-On for Argus Titan Systems

This option provides enhanced password control capabilities for Argus system administrators. It can be used to prevent unauthorized users from accessing protected areas of the system.



Applications



Customers operating Argus systems in public and multi-user settings may require enhanced password controlled access features.

In addition to the standard method of assigning **Global Privileges** for each user, this option provides the Argus system administrator with the ability to create custom **Access Profiles** to control the areas that individual users or groups of users can access.

Special Access Windows can also be created to provide designated users with selective access to readings and settings that are in otherwise restricted areas.

Alternatives

With the standard configuration of the Argus Operator program, user access is controlled by assigning simple **Global Privileges** that can either provide or restrict access to whole classes of activities such as the ability to change settings. In most cases this is sufficient to safeguard system integrity.

For more information, please contact Argus.