

Scheduled Setpoint Manager for Argus Titan 2 Control Systems

The **Scheduled Setpoint Manager** is a utility available in **Build 800** and beyond for importing and managing data from external sources including historical weather data and model-generated simulations.

It can be used for precision replication of weather and climate conditions over any time scale.



Applications

This is a screenshot of a software window titled "Import Setpoint Schedules - -- Argus Ref No.: 3058". The main heading is "Step 1/4. Specify Setpoint Schedule CSV File". Below this, there is a section labeled "Imported File:" with a text box and a "Browse..." button. At the bottom of the window, there are buttons for "Help", "<< Previous", "Next >>", and "Cancel".

The Scheduled Setpoint Manager imports externally produced data from .csv (comma separated value) files.

These files can be exported from spreadsheets or databases.

Importing these files enables programming of climate control targets based on actual weather records or model-generated climate data.

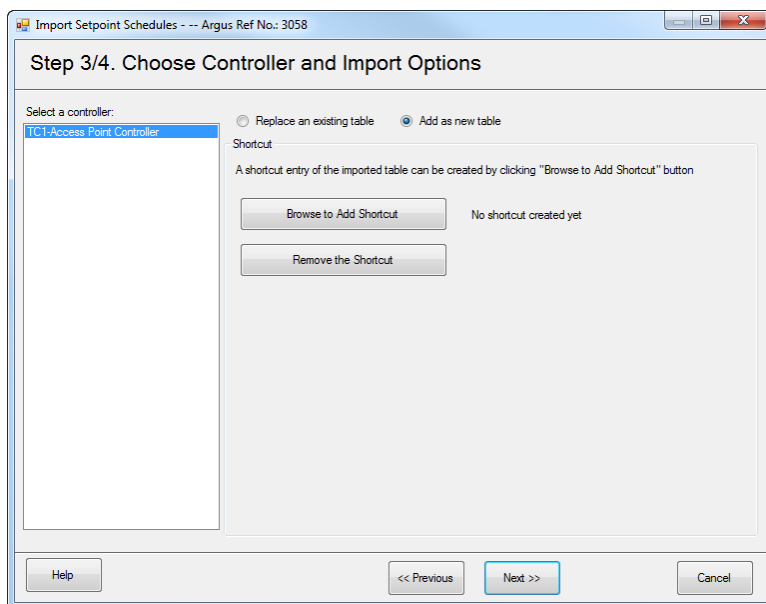
It also allows users to develop any type of sequential setpoint change schedule in an external application and then import the values into the control system in a single operation.

This is a screenshot of a software window titled "Import Setpoint Schedules - -- Argus Ref No.: 3058". The main heading is "Step 2/4. Verify The Imported Data". It contains several input fields: "Table Name:" with a text box, "Time Interval:" with a spinner set to "1" and the unit "minutes", and "First Row Date/Time:" with a date/time picker showing "07/11/2016 03:13:29". There is an "Update Times of all Channels" button. Below these is a section titled "Available Channels" with instructions: "Below are available channels. You may reorder the channels or remove a channel. Highlight any row to see detailed setpoints." It includes "Move Up" and "Move Down" buttons. At the bottom, there is a table with two columns: "Included" and "Description". The table is currently empty. At the bottom of the window, there are buttons for "Help", "<< Previous", "Next >>", and "Cancel".

With the Scheduled Setpoint Manager, you can run any number of seasonal climate simulations in suitably equipped growth chambers or greenhouse compartments.

The recorded weather conditions from any geographic region can be replicated by importing the actual weather records from a terrestrial weather station or by generating multi-day climate data for a specific geographic location using a weather-modeling application such as the SolarCalc program developed by the USDA.

Software



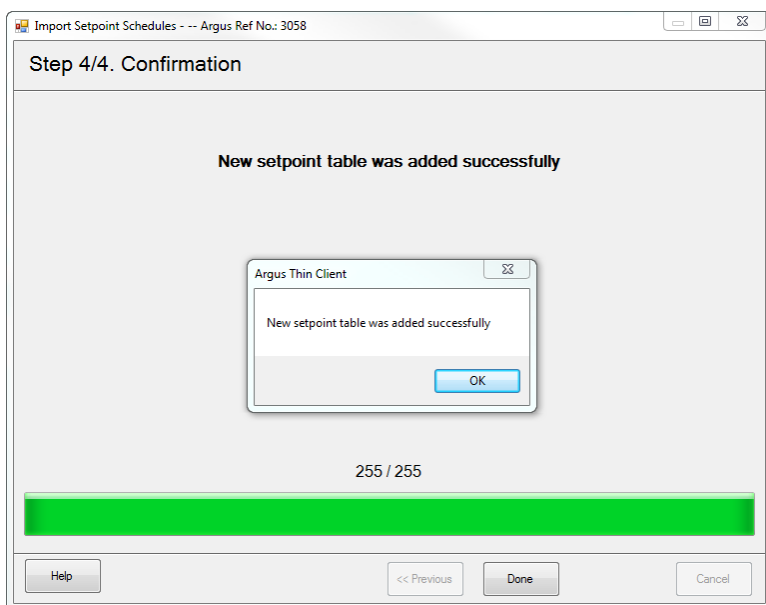
Imported data files are formatted in the Scheduled Setpoint Manager and then stored on the SD Card memory of the Titan controller. This can include changes in temperatures, humidity, light intensities, etc.

The Argus system then reads the data and replicates the recorded conditions in the controlled compartment. With this capability it is possible to run any number of replications of real-world climate conditions regardless of the time of year or the location of your test facility.

Saved schedules can accommodate advanced programming for days, weeks, or months at any recorded change interval between 1 and 1440 minutes. The Scheduled Setpoint Manager has capabilities for importing, editing, modifying, updating, and exporting data tables.

Matching SD Card Data Guardian programs running on the Titan controllers monitor the integrity of the imported data ensuring that all values fall within user-defined operational and safety limits before they are used in automated control applications.

Scheduled Setpoint Manager is for Builds 800 and above ONLY.



Additional Information



For more information, please contact Argus.